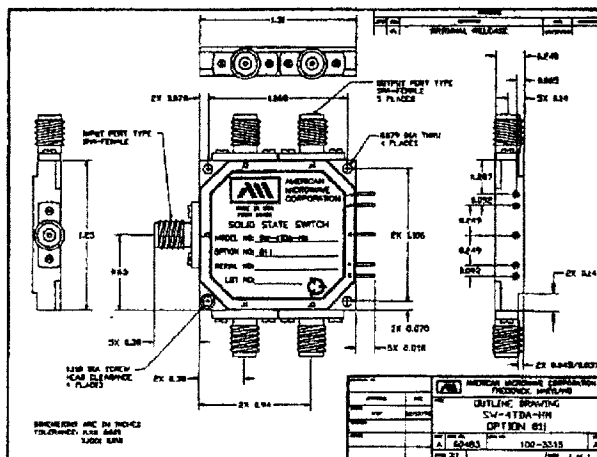


**AMERICAN MICROWAVE CORPORATION**

## SLIM-LINE, MINIATURE SP4T 1.0 TO 18.0 GHz SWITCH

- HIGH ISOLATION
- WIDEBAND
- LOW LOSS
- MINIATURE SIZE



### AMC MODEL No: SWS-118-4DR-HM

#### SPECIFICATIONS:

- FREQUENCY RANGE : 1.0 to 18.0 GHz
- INSERTION LOSS : 3.5 dB MAX.  
: ≤ 1.0 dB TYP. 1.0 TO 4.0 GHz  
: ≤ 1.5 dB TYP. 4.0 TO 10.0 GHz  
: ≤ 2.5 dB TYP. 10.0 TO 16.0 GHz  
: < 3.25 dB TYP. 16.0 TO 18.0 GHz
- ISOLATION : 65.0 dB MIN.  
: ≥ 80.0 dB TYP. 0.3 TO 1.0 GHz  
: ≥ 88.0 dB TYP. 1.0 TO 6.0 GHz  
: ≥ 80.0 dB TYP. 6.0 TO 12.0 GHz  
: ≥ 75.0 dB TYP. 12.0 TO 18.0 GHz
- VSWR : 2.0:1 MAX.
- SWITCHING SPEED : <10nS RISE/FALL (10% to 90%RF/90% to 10%RF)  
: <80nS ON/OFF (50% TTL to 90%RF/10%RF)
- CONTROL : TTL LOGIC, (TWO CONTROL LINES WITH DECODER)
- RF POWER : +20dBm MAX. Operating, 1 Watt Survival
- DC POWER SUPPLY : +5vdc @ <170mA MAX., (OTHER VOLTAGES AVAILABLE)  
: -15vdc @ <70mA MAX.
- SIZE : 1.31" X 1.25" X 0.24"
- WEIGHT : <2.5 oz.

ABSORPTIVE VERSIONS AVAILABLE

7311G GROVE ROAD, FREDERICK, MARYLAND 21701 • Tel. (301) 662-4700 • Fax (301) 662-4938